

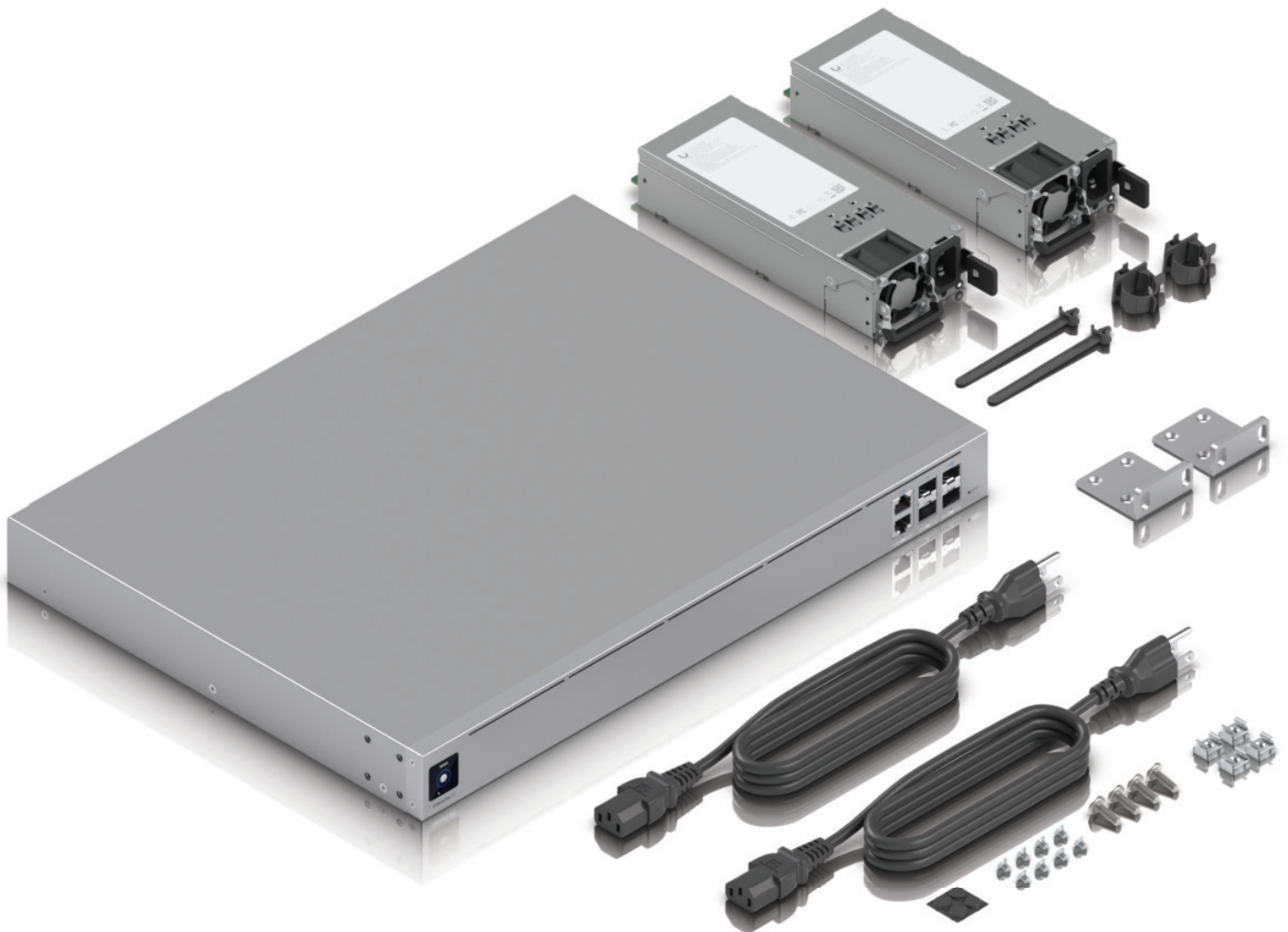
UniFi

Cloud Gateway Datasheet

MiRO

UniFi - Enterprise Fortress Gateway

SKU: UB-UE-EFG



The Ubiquiti UniFi Enterprise Fortress Gateway (EFG), a 25G Cloud Gateway delivering enterprise-level performance. Support over 500 UniFi devices and 5,000+ clients with 12.5 Gbps IPS routing. Enjoy license-free NeXT AI Inspection, Shadow Mode, VRRP, dual hot-swap PSUs, and easy management via a 1.3" touchscreen.

UniFi - Enterprise Fortress Gateway

SKU: UB-UE-EFG

Mechanical

Dimensions	442.4 x 43.7 x 325 mm (17.4 x 1.7 x 12.8")
Weight	6.5 kg (14.3 lb)
Enclosure material	Aluminium CNC, SGCC steel

Hardware

Processor	18-core ARM® v8.2 at 2 GHz
System memory	16 GB DDR4 DIMM
Management interface	Ethernet Bluetooth
Networking interface	LAN: (1) 25G SFP28 port (2) 10G SFP+ ports (1) 2.5G RJ45 port WAN: (1) 25G SFP28 port (1) 2.5G RJ45 port
Power method	(1) Universal AC input, 100—240V AC, 7A Max., 50/60 Hz
Power supply	(2) Hot-swappable 150W CRPS
Supported voltage range	100–240V AC
Max. power consumption	82W
ESD/EMP protection	Air: ± 8kV, contact: ± 4kV
LCM display	(1) 1.3" touchscreen
Button	Factory reset
Ambient operating temperature	0 to 40° C (22 to 104° F)
Ambient operating humidity	5 to 95% noncondensing
Certifications	CE, FCC, IC

UniFi - Enterprise Fortress Gateway

SKU: UB-UE-EFG

Gateway Features

Performance

- Redundant WAN with failover and load balancing
- WiFi QoS with UniFi APs
- Application, domain, and country-based QoS
- Application and device type identification
- Additional internet failover with LTE Backup
- Internet quality and outage reporting

Next-generation security

- Application-aware firewall rules
- Signature-based IPS/IDS threat detection
- Content, country, domain, and ad filtering
- VLAN/subnet-based traffic segmentation
- Full stateful firewall

Advanced networking

- License-free SD-WAN
- WireGuard, L2TP and OpenVPN server
- OpenVPN client
- OpenVPN and IPsec site-to-site VPN
- One-click Teleport and Identity VPN
- Policy-based WAN and VPN routing
- DHCP relay
- Customizable DHCP server
- IGMP proxy
- IPv6 ISP support

Capacity

UniFi devices	500+
Client devices	5,000+
Concurrent sessions	1 million
New sessions / sec	71,000
SSL/TLS inspection concurrent sessions	10,000

Limiting to 5,000 concurrent sessions is recommended if the gateway is passing significant traffic. This can be achieved by restricting which VLANs and domains pass through NeXT AI Inspection, such as only including search engine and LLM queries on employee devices. Learn more.

IDS/IPS signatures	80,000+
--------------------	---------

UniFi - Enterprise Fortress Gateway

SKU: UB-UE-EFG

Routing Throughput

Firewall 23.5 Gbps

IDS/IPS 12.5 Gbps

Measured with iPerf3 on DHCP WAN. Performance may be reduced with PPPoE depending on ISP implementation.

VPN Server Single User Throughput

UniFi Identity 1.2 Gbps

Teleport 1.2 Gbps

WireGuard 1.2 Gbps

OpenVPN 210 Mbps

L2TP 280 Mbps

Measured with iPerf3.

Site-to-Site VPN Single Tunnel Throughput

Site Magic 1.1 Gbps

OpenVPN 120 Mbps

IPsec 580 Mbps

Measured with iPerf3.

VPN Client Single Tunnel Throughput

WireGuard 980 Mbps

OpenVPN 180 Mbps

Measured with iPerf3.

LEDs

Ethernet White: Link/activity

SFP+ White: Link/activity

CRPS Off: No AC power present

Steady white: AC power and DC output active

Flashing white: AC power present

Steady red: AC power lost/failure events

Flashing red: Warning events

Software

Mobile app UniFi iOS™:Version 10.16.2 and later

UniFi - Enterprise Fortress Gateway

SKU: UB-UE-EFG

